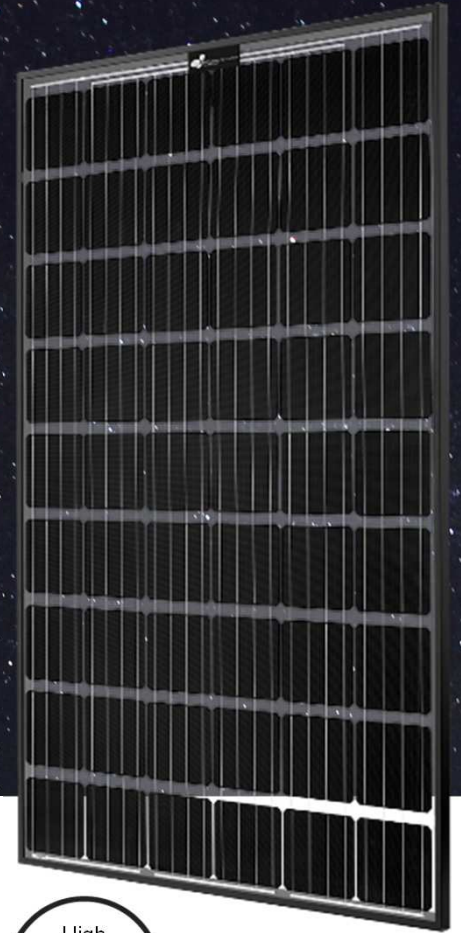




SONNENSTROM
FABRIK



EXCELLENT GLASS/GLASS M54
brilliant

MONOCRYSTALLINE 270-280 WP



Transparency and Performance

The cell matrix is optimized for light transmission and maximum performance

The optimized cell matrix enables a light transparency of 19%

Optimizes electricity production whilst preserving daylight diffusion for agricultural greenhouses and buildings

Perfect architectural integration and control of natural light contribution for verandas, pergolas, awnings and carports

30 years linear performance guarantee
20 years product guarantee

Optional Total Care for the entire system

EXCELLENT GLASS/GLASS 270 | 275 | 280 M54

brilliant

Performance STC

Under standard Test Conditions STC:
1000 W/m²; spectrum AM 1.5;
Cell temperature 25°C
Measurement tolerance STC:
P_{mpp} ±3%; I_{sc} ±10%; U_{oc} ±10%

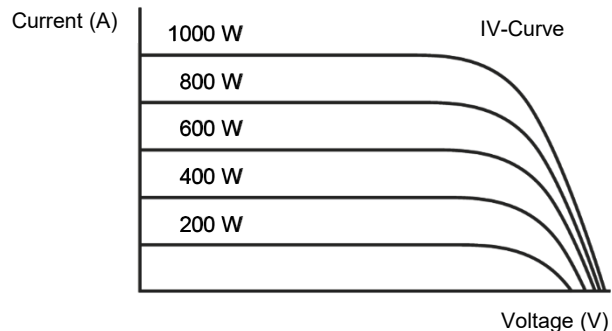
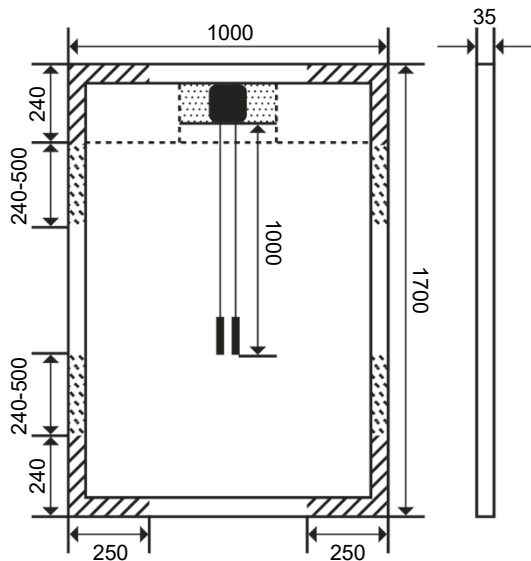
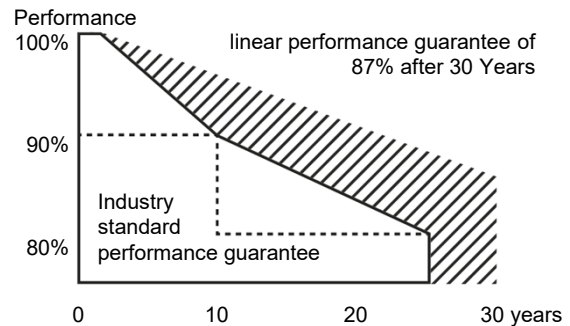
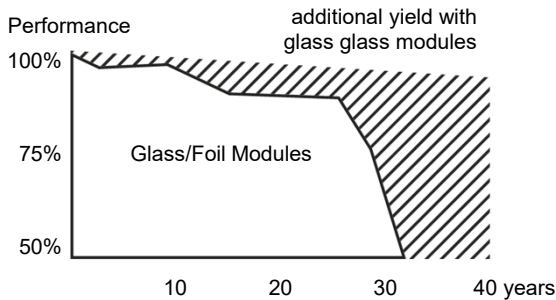
Nominal Power P _{mpp} (Wp)	270	275	280
Open Circuit Voltage U _{oc} (V)	35,55	36,22	36,27
Voltage U _{mpp} (V)	29,45	29,63	29,82
Short Circuit Current I _{sc} (A)	9,74	9,84	9,89
Current I _{mpp} (A)	9,17	9,28	9,39
Efficiency η (%)	15,9	16,2	16,5

Reduction of module efficiency at reduction from 1000 W/m² to 200 W/m²: 2,4% ± 0,3% (relative)

Performance NMOT

Nominal operating temperature of module
800 W/m², NMOT, AM 1.5

Nominal Power P _{mpp} (Wp)	210	215	219
Open Circuit Voltage U _{oc} (V)	33,25	33,87	33,92
Voltage U _{mpp} (V)	28,73	29,00	29,16
Short Circuit Current I _{sc} (A)	7,87	7,95	7,99
Current I _{mpp} (A)	7,32	7,41	7,49



clamping area
 approved up to 2.400 Pa
 no contact between junction box and mounting profile permitted in this area.
 approved up to 5.400 Pa

measurements in mm

Other Technical Specification

Max. system voltage	1000 V
Weight	22.0 ± 0.5 kg
Reverse Current Load IR	15 A
Junction box	IP 67 with 3 bypass diodes
Connectors	IP 67, MC4
Fire rating	class C
Operating temperature	-40°C ... +85°C
Design load: snow	5.400 Pa *
Max test load	8.100 Pa
Design load: wind	2.400 Pa *
Max test load	3.600 Pa

* safety factor 1.5

Thermal Properties

TC P _{mpp}	-0.39 %/K
TC U _{oc}	-0.28 %/K
TC I _{sc}	0.040 %/K
NMOT	45 +/- 2 °C

Material Used

No. of cells	54 cells
Type of cells	monocrystalline
Front	hardened solar glass
Frame	anodized aluminium
Frame height	35 mm

